

# Connah's Quay Low Carbon Power

Environmental Statement Volume III  
Figure 12-1: Marine Ecology Study Area Including the Water Connection Corridor

Planning Inspectorate Reference: EN010166

Document Reference: EN010166/APP/6.3

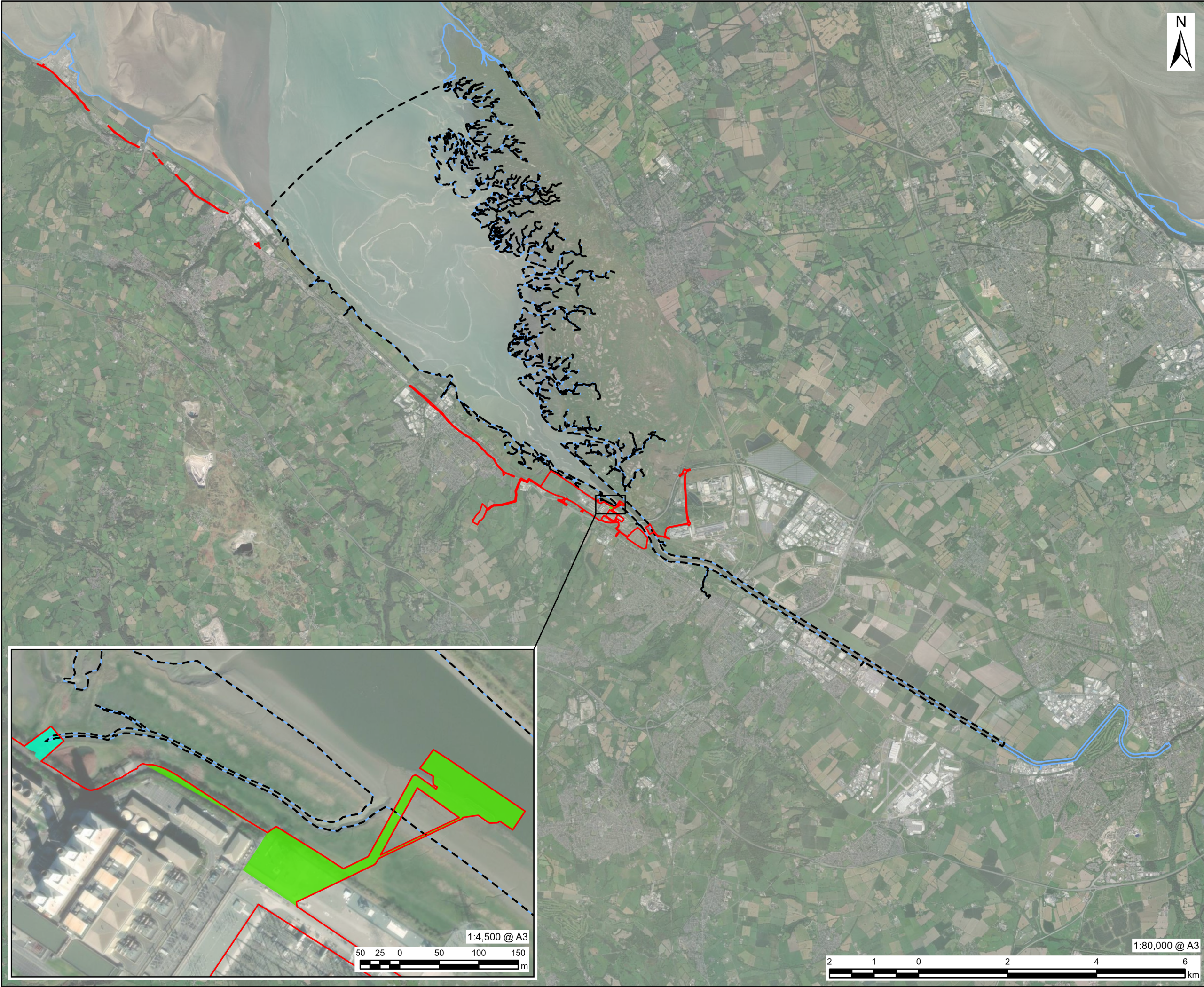
Planning Act 2008 (as amended)

Infrastructure Planning (Applications: Prescribed Forms and Procedure) Regulations 2009 - Regulation 5(2)(a)

Revision 00

August 2025





This drawing has been prepared for the use of AECOM's client. It may not be used, modified, reproduced or relied upon by third parties, except as agreed by AECOM or as required by law. AECOM accepts no responsibility, and denies any liability whatsoever, to any party that uses or relies on this drawing without AECOM's express written consent. Do not scale this document. All measurements must be obtained from the stated dimensions.

**PROJECT**  
Connah's Quay Low Carbon Power

**CONSULTANT**  
AECOM Limited  
The Colmore Building  
Colmore Circus, Queensway  
Birmingham, B4 6AT  
www.aecom.com

**LEGEND**

- Order limits
- Marine Ecology Study Area (10km)
- Surface Water Outfall Area
- Water Connection Corridor (WCC)
- Mean High Water Springs (MHWS)

**NOTES**  
© Crown Copyright 2025. All rights reserved.  
Ordnance Survey Licence AC0000808122.  
Contains Ordnance Survey Data © Crown Copyright and database right 2024.  
Maxar, Microsoft, Earthstar Geographics.

**ISSUE PURPOSE**  
Environmental Statement

**DATE**  
July 2025

**PROJECT NUMBER**  
60717119

**FIGURE TITLE**  
Marine Ecology Study Area Including the Water Connection Corridor

**FIGURE NUMBER**  
Figure 12-1